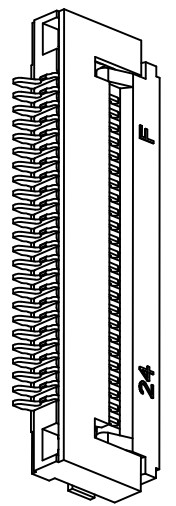
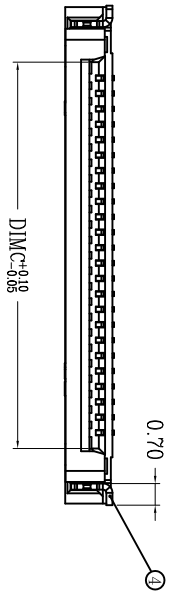
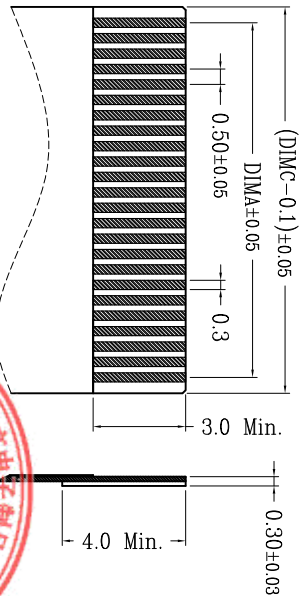
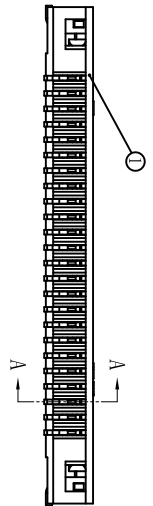
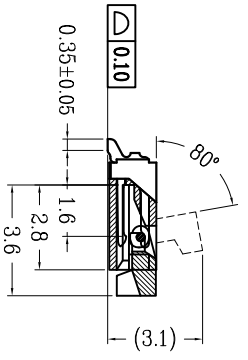
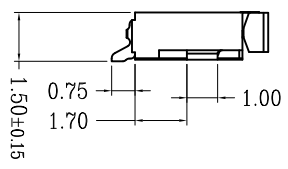
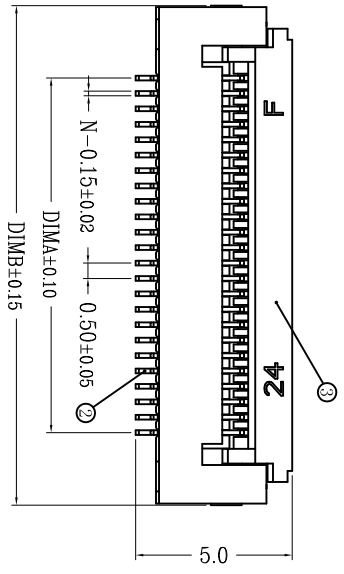


版次	变更摘要	日期	序号	品名	材质
1	增加料号说明	2015/1/28	①	0.5掀盖胶芯 (H1.5)	LCP UL94V-0 本色
			②	0.5掀盖端子 (H1.5)	铜合金/表面镀锡 镀金
			③	0.5掀盖后盖 (H1.5)	LCP UL94V-0 黑色
			④	0.5掀盖铜片 (H1.5)	铜合金/表面镀锡



①	0.5掀盖胶芯 (H1.5)	LCP UL94V-0 本色
②	0.5掀盖端子 (H1.5)	铜合金/表面镀锡 镀金
③	0.5掀盖后盖 (H1.5)	LCP UL94V-0 黑色
④	0.5掀盖铜片 (H1.5)	铜合金/表面镀锡



- 技术指标:
1. 塑件表面应光洁、无毛边、无明显收缩、缺陷、裂纹等现象。
 2. 温度范围: -25° C~85° C.
 3. 额定电压: 50V, AC/DC(等效).
 4. 接触电阻: ≤0.03Ω.
 5. 绝缘电阻: ≥500MΩ.
 6. 产品料号:

XW05152-**-**-**

NO. OF CKT (产品PIN数)

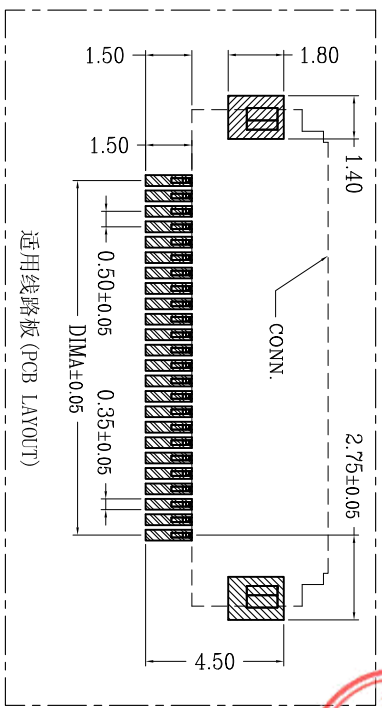
Plating (电镀方式)

0: 端子全雾锡
1: 端子全金 (G/F OVERALL)

5: 端子半金锡

Packing (包装方式)

T: TUBE管装
R: TAPE & REEL卷装



CKT	DIMA	DIMB	DIMC	CKT	DIMA	DIMB	DIMC
4	1.50	6.20	2.53	33	16.00	20.70	17.03
5	2.00	6.70	3.03	34	16.50	21.20	17.53
6	2.50	7.20	3.53	35	17.00	21.70	18.03
7	3.00	7.70	4.03	36	17.50	22.20	18.53
8	3.50	8.20	4.53	37	18.00	22.70	19.03
9	4.00	8.70	5.03	38	18.50	23.20	19.53
10	4.50	9.20	5.53	39	19.00	23.70	20.03
11	5.00	9.70	6.03	40	19.50	24.20	20.53
12	5.50	10.20	6.53	41	20.00	24.70	21.03
13	6.00	10.70	7.03	42	20.50	25.20	21.53
14	6.50	11.20	7.53	43	21.00	25.70	22.03
15	7.00	11.70	8.03	44	21.50	26.20	22.53
16	7.50	12.20	8.53	45	22.00	26.70	23.03
17	8.00	12.70	9.03	46	22.50	27.20	23.53
18	8.50	13.20	9.53	47	23.00	27.70	24.03
19	9.00	13.70	10.03	48	23.50	28.20	24.53
20	9.50	14.20	10.53	49	24.00	28.70	25.03
21	10.00	14.70	11.03	50	24.50	29.20	25.53
22	10.50	15.20	11.53	51	25.00	29.70	26.03
23	11.00	15.70	12.03	52	25.50	30.20	26.53
24	11.50	16.20	12.53	53	26.00	30.70	27.03
25	12.00	16.70	13.03	54	26.50	31.20	27.53
26	12.50	17.20	13.53	55	27.00	31.70	28.03
27	13.00	17.70	14.03	56	27.50	32.20	28.53
28	13.50	18.20	14.53	57	28.00	32.70	29.03
29	14.00	18.70	15.03	58	28.50	33.20	29.53
30	14.50	19.20	15.53	59	29.00	33.70	30.03
31	15.00	19.70	16.03	60	29.50	34.20	30.53
32	15.50	20.20	16.53				

东莞市铨高电子有限公司



一般公差 (TOLERANCE)
X ±0.50 XX ±1.0
X ±0.20 XXX ±0.05
ANGLES ±1°

品名 (ITEM)	0.5 Pitch掀盖卧式下接 (H=1.5)	制图 (DR)	Anlan
图号 (DRAWING)	XW05152-**-**-**	校对 (CHKD)	王涛
比例 (SCALE)	1:1	审核 (APPD)	黄志明
单位 (UNITS)	mm	张数 (SHEET)	1 Of 1
尺寸 (SIZE)	A4	REV	A