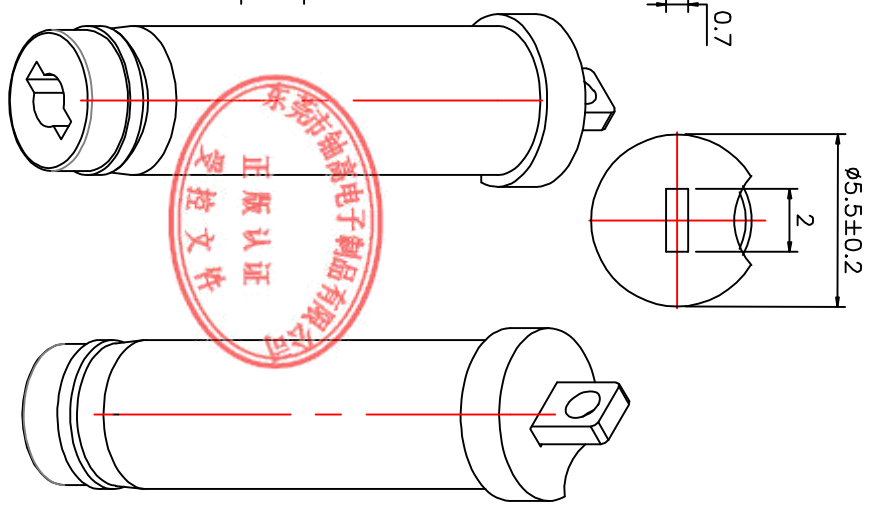
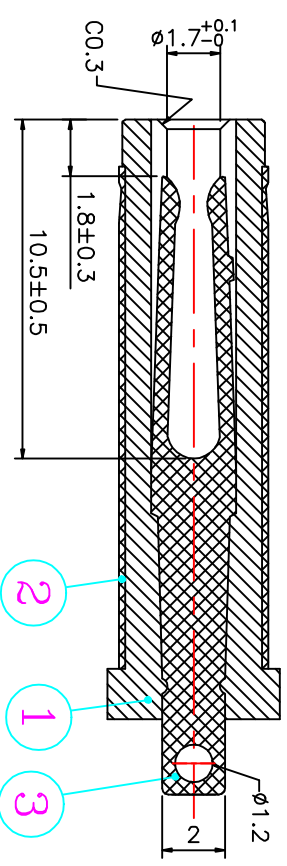
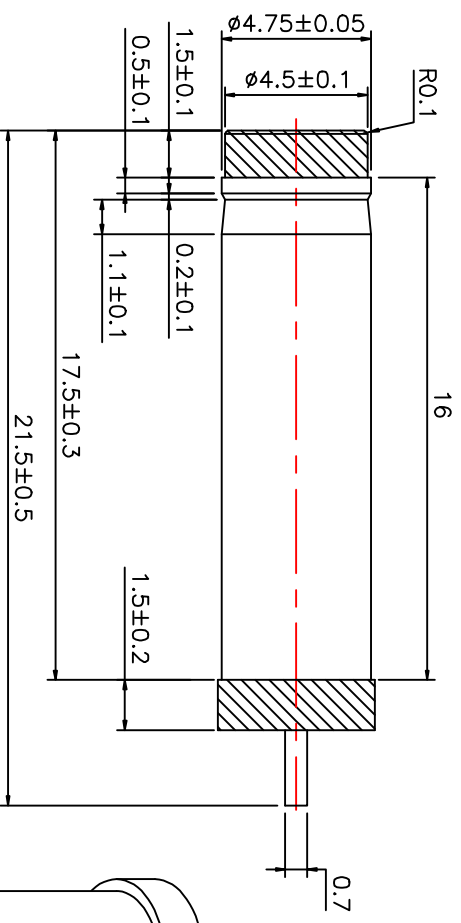
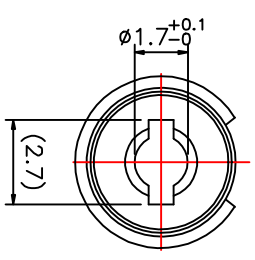


ROHS

| REV | 修正标记 REVLR | 修正前 BEFORE REVISION | 修正后 AFTER REVISION | 姓名 SIGN | 日期 DATE |
|------|---------------|------------------------|-----------------------|------------|------------|
| V1.0 | | 新做标准 | | June | 20200221 |
| | | | | | |
| | | | | | |



Technology Request:

1. Outlock: No hurt, no hurt.
2. Electronic performance:

a: Insulation performance: Above DC500V/100M Ω;
b: Reduce voltage: AC500V at 1 minute;
c: Contact resistance: Under 30m Ω;
d: Insertion force & withdrawal force: 0.9-3kgf.
4. Salt spray test: 48H.
5. Meet RoHS.
6. Remark * is important specification.

| 单位 Unit | 一般公差 The General Tolerance | 7 | 8 | 9 | 10 | 11 | 12 | 13 | 14 |
|------------------------------|-------------------------------|-----|---------|---|----|----|----|----|----|
| 比例 Scale | XX:±0.3 | | | | | | | | |
| 视图 Third angle projection | X:X:±0.1 | | | | | | | | |
| 第三角投影 | .XX:±0.05 | | | | | | | | |
| NO. | | NO. | | | | | | | |
| 1 | | 1 | PLASTIC | | | | | | |
| 2 | | 2 | PLASTIC | | | | | | |
| 3 | | 3 | PLASTIC | | | | | | |
| 4 | | 4 | PLASTIC | | | | | | |
| 5 | | 5 | PLASTIC | | | | | | |
| 6 | | 6 | PLASTIC | | | | | | |
| 7 | | 7 | PLASTIC | | | | | | |
| 8 | | 8 | PLASTIC | | | | | | |
| 9 | | 9 | PLASTIC | | | | | | |

东莞市铷高电子有限公司

规格 DESCRIPTION: DC PLUG $\phi 4.75 \times \phi 1.7 \times 21.5$

品名 P/N: 47517T215M18YE

图号 DRAWN NO: CP-01-0192

批准 APPROVED BY

六月 June

杨义邦

苏伟伦

校对 CHECKED BY

杨义邦

苏伟伦

制图 DRAWN BY

苏伟伦

苏伟伦