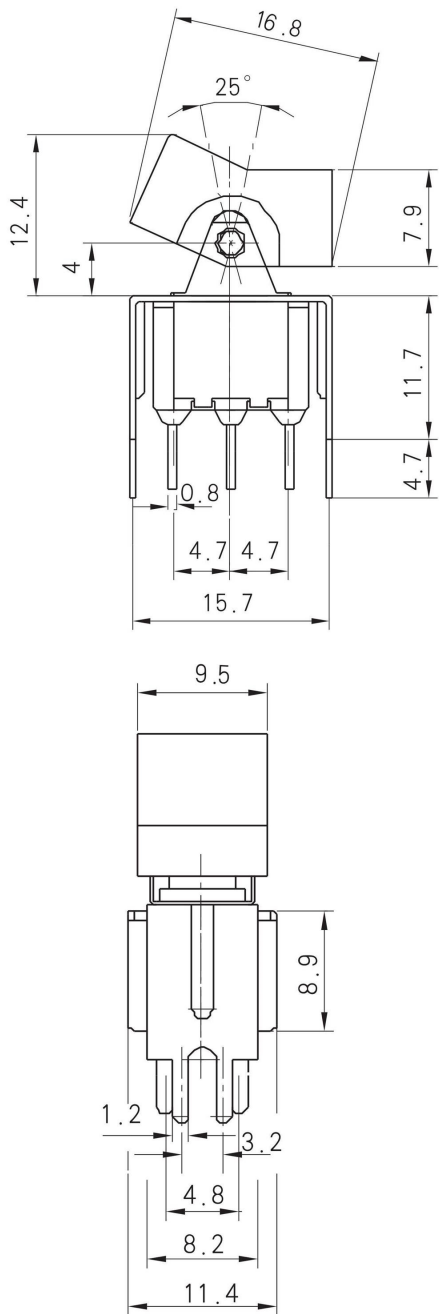


外型图 (Outline Drawing)



安规认证 (Safety Certification)



| 自由公差 | | |
|---------|------|-------|
| 区分 | 类别 | 公差 |
| 0 | <0.5 | ±0.10 |
| 0.50 | <5 | ±0.15 |
| 5.0 | <10 | ±0.20 |
| 10.0 | <20 | ±0.30 |
| 20.0 | <50 | ±0.40 |
| 未标注R角 | | R0.2 |
| 未标注角度公差 | | ±1° |

电路图 (Circuitry)

| | |
|-------------|---------------|
| RLS-202-A2T | ON-ON |
| RLS-212-A2T | ON-(ON) |
| RLS-203-A2T | ON-OFF-ON |
| RLS-213-A2T | ON-OFF-(ON) |
| RLS-223-A2T | (ON)-OFF-(ON) |
| DPDT | 6P |

技术特性 (Specification)



| 技术特性 | Specification |
|---------|---|
| 1. 规格 | Rating: 2A 250V AC; 5A 125V AC |
| 2. 接触电阻 | Contact R: 20mΩ Max |
| 3. 绝缘电阻 | Insulation R: 500V DC 1000MΩ Min |
| 4. 耐电压 | Dielectric strength: 1500V AC, 1 Minute |
| 5. 操作温度 | Operating temperature: -55°C ~ +85°C |
| 6. 电气寿命 | Electrical life: 20,000 Cycles |

| NO | NAME | MATERIAL | QTY | FINISHING | NO | NAME | MATERIAL | QTY | FINISHING | APVD | DATE | 2020-03-04 | | |
|----|------|----------|-----|-----------|---------------|------|----------|-----|-----------|-------------------|---------------|------------|-------|----|
| 1 | 手柄 | 黄铜 | 1 | 镀铬 | 7 | 动触片 | H65 | 1 | 镀银 | SPECIFICATION NO. | | | | |
| 2 | 轴套 | 黄铜 | 1 | 镀铬 | 8 | 端子 | H65 | 3 | 镀银 | TITLE | TOGGLE SWITCH | | | |
| 3 | 铁盖 | SUS | 1 | 本色 | 9 | 基座 | PPA | 1 | 红色 | PART NO. | RLS-XXX-A2T | | | |
| 4 | 弹簧 | 碳钢 | 1 | 黑色 | 10 | 插脚 | SPCC | 1 | 镀银 | MATERIAL NO. | SM00066ZNR | | | |
| 5 | 摆杆 | SPCC | 1 | 镀镍 | 东莞市铈高电子制品有限公司 | | | | | SCALE | 1:1 | | UNIT: | mm |
| 6 | 滑块 | PA46 | 1 | 黑色 | | | | | | CKD | | DWN | 黄泳何 | |