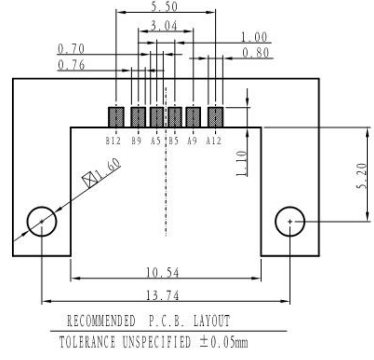
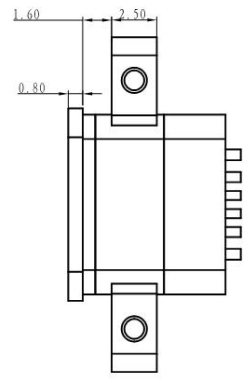
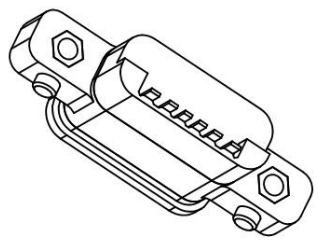
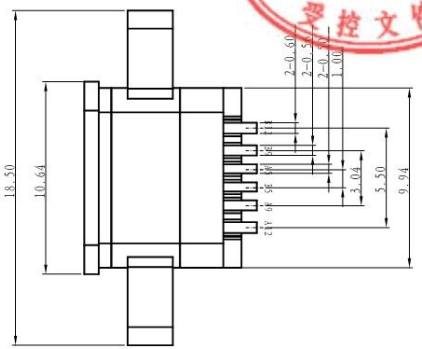
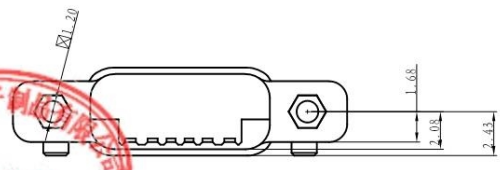
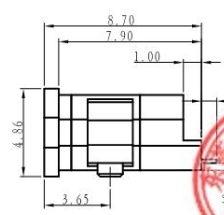
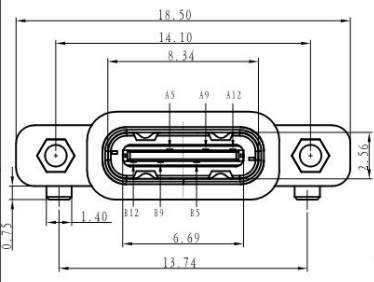


REV.	ECN NO.	DESCRIPTION	DRAW	APPD.	DATE
A	---	新版本发行			2018.09.22



- NOTES:  
SPECIFICATION:
1. CURRENT RATING: 3.0A MAX
  2. VOLTAGE: 100 VAC
  3. TEMPERATURE RANGE: -30 °C ~ 85 °C
  4. CONTACT RESISTANCE: 40 MILLIONHM MAX
  5. INSULATION RESISTANCE: 100 MEGOHMS MIN.
  6. INSERTION FORCE: 5N~20N
  7. UNMATING FORCE: 8N~20N
  8. DURABILITY: 10,000 CYCLES



A5	CC1	B12	GND
A9	VBUS	B9	VBUS
A12	GND	B5	CC2
PIN	SIGNAL NAME	PIN	SIGNAL NAME

5	防水圈	硅胶	BLACK	IPCS
4	SHELL	STAINLESS STEEL	NI Plated	IPCS
3	SHIELDING PLATE	STAINLESS STEEL	NI Plated	IPCS
2	CONTACT	COPPER BILLY	TIN/Au/NI Plated	LIST
1	HOUSING	HIGH TEMPERATURE PLASTIC	BLACK	IPCS
NO.	DESCRIPTION	MATERIAL	REMARKS	QTY
TOLERANCE		NAME (INTENDED USE) CUSTOMER DRAWING		东莞市铀高电子制品有限公司
X.X ±0.30	X.X ±2	PART NO.	TITLE: Type-c 单排6P防水型母座	
.XX ±0.20	.X ±1	APPD: DMX	DRAWG NO. A0-036	
.XXX ±0.10	.XX ±0.5	CHEG: TANG	SCALE	SHEET
UNITS: mm		DRAW: SHI	1:1	1/1
MATERILA				REV. A
FINISH				