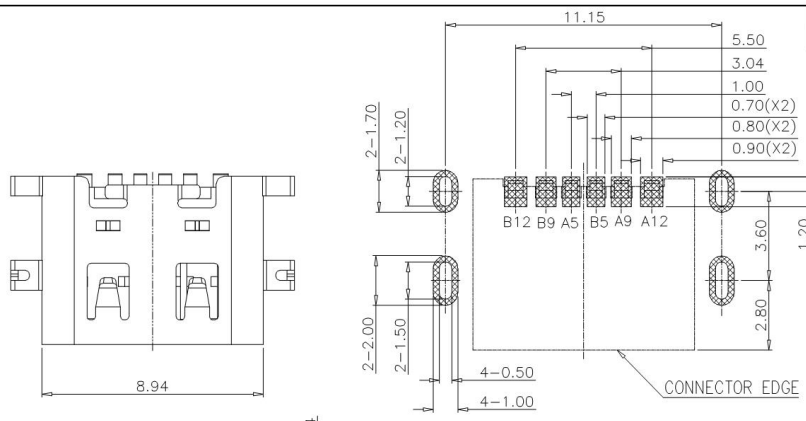
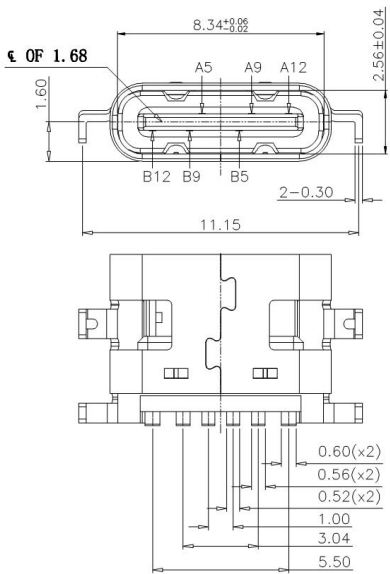
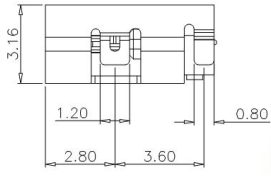


Rev No.	Description of Revision	Date	Name	Approved	ECN No.
▲X					



RECOMMENDED PCB LAYOUT(TOP VIEW)  
THICKNESS 1.6±0.10MM;DEFAULT TOLERANCE:±0.05



NOTE:  
1.MATERIAL SPECIFICATION:  
1.HOUSING:HIGH TEMPERATURE RESISTANT PLASTIC,UL94 V-0.  
2.CONTACTS:COPPER ALLOY  
3.MID PLATE: STAINLESS STEEL  
4.FRONT SHELL: STAINLESS STEEL  
2.PLATING SPECIFICATION:  
2-1.CONTACTS:  
Ni 50u" MIN. UNDER PLATED OVER ALL.  
Au PLATED ON THE FUNCTIONAL AREA OF CONTACT.  
(GOLD PLATING THICKNESS FOLLOW THE P/N)  
PLATING SPECIFICATIONS OF THE SOLDER AREA FOLLOW THE P/N  
2-2.FRONT SHELL:  
SEE TABLE1.  
2-3.SHIELD PLATE&EMI PLATE:  
CLEAR ONLY  
3.MECHANICAL PERFORMANCE,  
3-1.INSERTION FORCE: 0.5~2.0kgf.  
3-2.REMOVAL FORCE: 0.8kgf~2.0kgf.  
3-3.DURABILITY: 10000 CYCLES.  
4.ELECTRICAL PERFORMANCE,  
4-1. CURRENT RATING:5.0A  
VOLTAGE RATING:5.0V  
4-2. LLCR:  
VBUS & GND PINS AND OTHER PINS: 40mΩ/PIN MAX.  
SHIELD: 50mΩ/MAX.  
LLCR MAX. CHANGE OF ALL PINS: 10mΩ.  
4-3.INSULATION RESISTANCE: 100MΩ MIN  
4-4.DIELECTRIC WITHSTAND VOLTAGE,AC 100V FOR 1 MINUTE.  
5. ENVIRONMENTAL PERFORMANCE:  
OPERATING TEMPERATURE: -25°C~+85°C.  
6.IR REFLOW:  
THE PEAK TEMPERATURE ON THE BOARD SHALL  
BE MAINTAINED FOR 10 SECONDS AT 260°C.



PIN ASSIGNMENTS

A5	CC1	B12	GND
A9	VBUS	B9	VBUS
A12	GND	B5	CC2
PIN	SIGNAL NAME	PIN	SIGNAL NAME

UNLESS OTHERWISE SPECIFIED TOLERANCES		东莞市铨高电子制品有限公司			
DECIMALS:	ANGLES	TITLE: TYPE-C 6Pin 沉板1.60mm			
X. ±0.20	X' ±2'	Drwn: JACK.LI	PART NO.		
X.X ±0.15	X.X' ±1'	Checked: PETER.LIU	SCALE: 1:8	UNIT: mm	PROJ.
X.XX ±0.10	X.XX' ±0.5'	Approved: JACK.D	SIZE: A4	SHEET: 1 OF 1	REV: A
X.XXX ±0.05		CUSTOMER COPY			