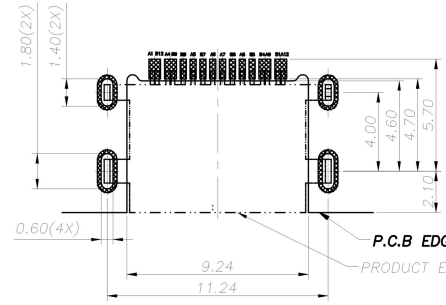
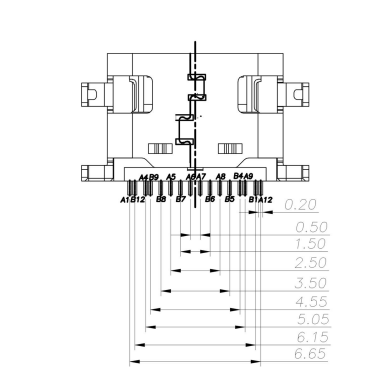
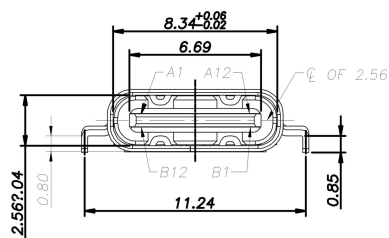
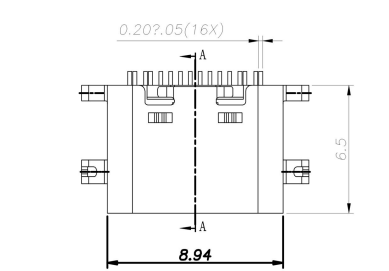
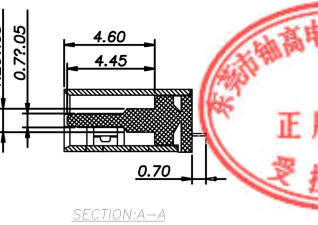
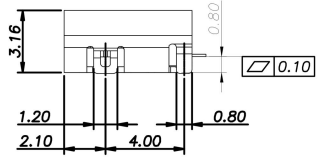


REV.	ECN NO.	DESCRIPTION	APP.	DATE
A				



**RECOMMENDED PCB LAYOUT(TOP VIEW)**  
THICKNESS 0.80MM;DEFAULT TOLERANCE:±0.05



- NOTE:**
- MATERIAL SPECIFICATION:**
    - HOUSING:HIGH TEMPERATURE RESISTANT PLASTIC,UL94 V-0.
    - CONTACTS:COPPER ALLOY
    - MID PLATE: STAINLESS STEEL
    - FRONT SHELL: STAINLESS STEEL
  - PLATING SPECIFICATION:**
    - CONTACTS:
      - Ni 50u" MIN. UNDER PLATED OVER ALL.
      - Au PLATED ON THE FUNCTIONAL AREA OF CONTACT.
    - FRONT SHELL:
      - GOLD PLATING THICKNESS FOLLOW THE P/N
      - PLATING SPECIFICATIONS OF THE SOLDER AREA FOLLOW THE P/N
  - MECHANICAL PERFORMANCE,**
    - INSERTION FORCE: 0.5~1.5kgf.
    - REMOVAL FORCE: 0.8kgf~1.5kgf.
    - DURABILITY: 5000 CYCLES.
  - ELECTRICAL PERFORMANCE,**
    - CURRENT RATING:3.0A  
VOLTAGE RATING:5.0V
    - LLCR:
      - VBUS & GND PINS AND OTHER PINS: 40mΩ/PIN MAX.
      - SHIELD: 50mΩ/MAX.
      - LLCR MAX. CHANGE OF ALL PINS: 10mΩ.
    - INSULATION RESISTANCE: 100MΩ MIN
    - DIELECTRIC WITHSTAND VOLTAGE,AC 100V FOR 1 MINUTE.
  - ENVIRONMENTAL PERFORMANCE:**
    - OPERATING TEMPERATURE: -25~+85℃.
    - REFLOW:
      - THE PEAK TEMPERATURE ON THE BOARD SHALL BE MAINTAINED FOR 10 SECONDS AT 260°C.



THIS PRODUCT SHOULD MEET HAZARDOUS MATERIAL CONTROL DIRECTIVE OF JUN SHENG JIE FROM RAW MATERIAL TO MANUFACTURING, PACKAGE AND DELIVERY.

TOLERANCES		UNIT : mm		东莞市铀高电子制品有限公司	
一般公差		UNITLET		DRAWN TONY	
DISTANCE		UNITLET			
X.	±0.30	CHECKED JACK		TITLE : TYPE-C 16PIN 单排 沉板0.8mm L=6.5mm	
.X	±0.25	APPROVE DAVID		PARTS NO. :	
.XX	±0.15			DWG NO. :	
.XXX	±0.10			SIZE A4 SCALE 1:1 SHEET 1 of 1 REV. A	
ANGLE					
X'	±2'				
.X'	±1'				
.XX'	±0.5'				