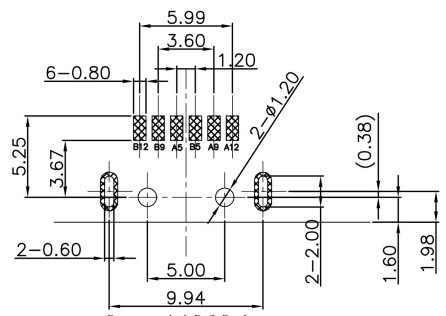
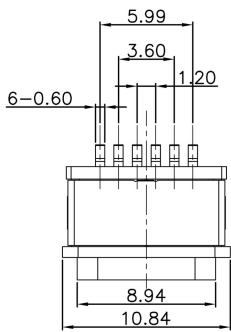
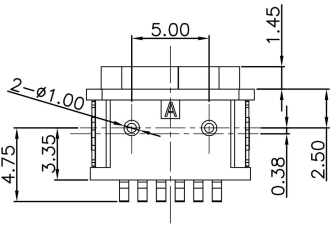
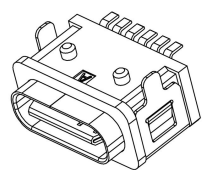
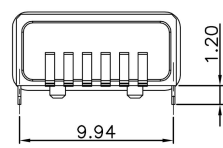
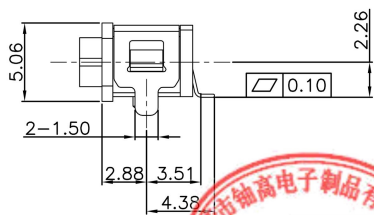
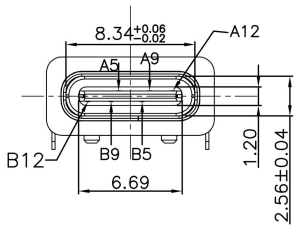


REV.	ECN. NO.	APPD.
------	----------	-------

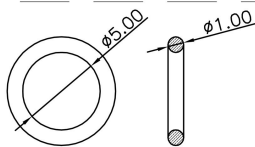


Recommended P.C.B. Layout  
Unspecified tolerance: ±0.05  
(Top view)

- SPECIFICATION:
- CURRENT RATING: 3.0A MAX
  - DIELECTRIC WITHSTAND VOLTAGE: 100VAC
  - TEMPERATURE RANGE: -30 °C ~ 85 °C
  - CONTACT RESISTANCE: 40 MILLIONHM MAX
  - INSULATION RESISTANCE: 100 MEGOHMS MIN.
  - INSERTION FORCE : 5N~20N
  - UNMATING FORCE: 8N~20N
  - DURABILITY:10,000 CYCLES
  - WATER PROOFNESS:THIS PRODUCT IS BASED ON IPX7.



A5	CC1	B12	GND
A9	VBUS	B9	VBUS
A12	GND	B5	CC2
PIN	SIGNAL NAME	PIN	SIGNAL NAME



注: 防水圈是圆形截面, 直径为1.0mm的硅胶圈, 防水圈挤压力, 由1.0mm挤压到0.5mm ~ 0.6mm, 防水效果好

5	Shell 2	1	SUS301 Ni Plating T=0.20mm	Ni:40u"Min;
4	Shell 1	1	SUS301 Ni Plating T=0.25mm	Ni:40u"Min;
3	Housing 2	1	PA10T(G.F30%)	
2	Contact	6	Phosphor bronze C5210R-EH Au/Ni Plating T=0.20mm	Ni:40u"Min; Au:CONTACT AREA:1u", OTHER AREA:G/F
1	Housing	1	PA10T (G.F30%)	

ITEM	PART NAME	Q' TY	FINISH	NOTE
		UNITS	东莞市铀高电子制品有限公司	
		mm		
		MAT'L	PART NO.	TITLE: TYPE C 6Pin SMT Type
		FINISH	DWG NO.:	
X.	± 0.50	X.*	± 2*	
.X	± 0.30	.X*	± 1*	
.XX	± 0.10	.XX*	± 0.5*	
.XXX	± 0.05	Q' TY		
		DR:		
			SCALE	SHEET
			1/1	1/2
				REV.
				A1

由Autodesk教育版产品制作