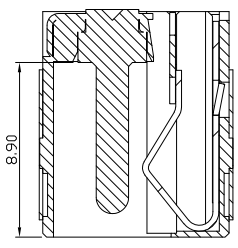
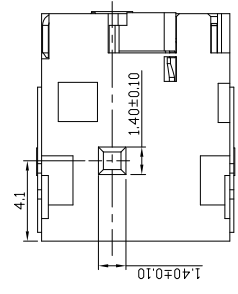
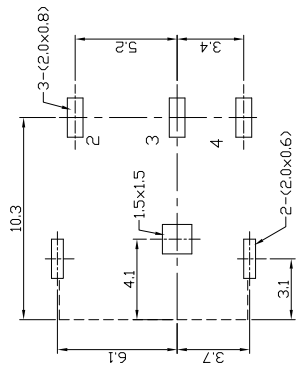
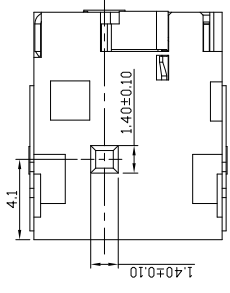
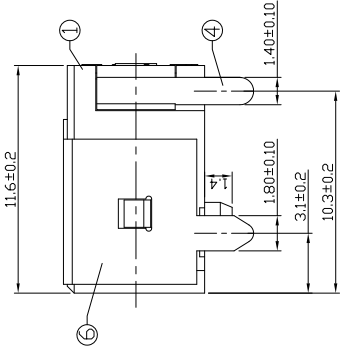


1 2 3 4 5 6 7 8

RoHS Compliant
2002/95/EC

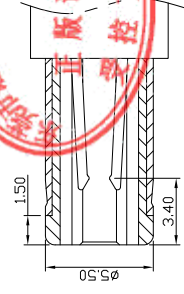
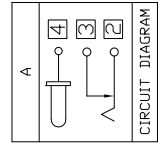
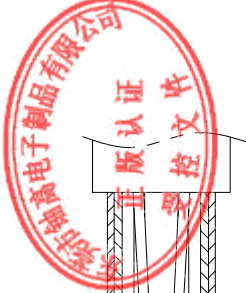


PCB. 焊接图

PCB. WELDING DRAWING

主要技术参数、性能

额定电流、电压	5A DC24V
接触电阻	≤ 50mΩ
绝缘电阻	≥ 100MΩ
耐电压	500VAC
插拔力	3-30N
寿命	5000次
温度范围	-20°C~70°C
湿度范围	-40°C~85°C



DC MATE PLUG

Model No.	G	H	J
CENTER PIN	Ø1.55	Ø2.0	Ø2.5

7	Cover	SUS 301	Ni 60U"Min	一般公差	绘图	杨瑛平	产品名称	DC JACK
6	Contact Foot	C2680	Tin 100U"Min	0.5~2	审核	郑金钰	产品型号	YG-DCSO-217BA
5	PIN	C2680	U"MinNi 60	2~5	批准	林进生	日期	2023.05.19
4	Contact Foot	C2680	Ag 10 μmin	5~10	SHEET	1:1 UNIT	mm	
3	Curve Piece	C2680	Ag 10 μmin	ANGLE	THESE DRAWINGS AND SPECIFICATIONS ARE THE PROPERTY OF ACCURATE INNOTECH INC. AND SHALL NOT BE REPRODUCED OR USED IN ANY MANNER WITHOUT THE PRIOR WRITTEN CONSENT OF ACCURATE INNOTECH INC.			
2	Spring Piece	C5210	Ag 10 μmin	±3°				
1	Housing	PA9T	Black					
项目	名称	材质	数量	表面处理/颜色	东莞市铀高电子有限公司			

1 2 3 4 5 6 7 8