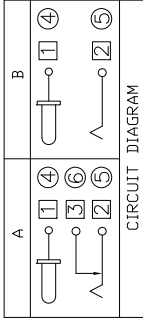
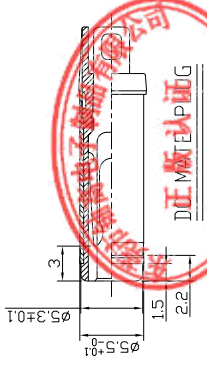


PCB. 焊接图

PCB WELDING DRAWING



Model No.	H	I
CENTER PIN	∅2.0	∅2.35 ∅2.5

主要技术参数、性能

额定电流、电压	2.5A DC16V
接触电阻	≤ 30mΩ
绝缘电阻	≥ 100MΩ
耐电压	500VAC
插拔力	3-30N
寿命	5000次
温度范围	-20℃~70℃
湿度范围	-40℃~85℃

7				一般公差		绘图	杨瑛平	产品名称	DC JACK	
6	Shunt Terminal 3	Brass t=0.4	1	Tin plating	0.5~2	±0.10	审核	郑金钰	产品型号	YG-DCB0-0050A
5	Tip Spring 2	Bronze t=0.3	1	Tin plating	2~5	±0.25	批准	林进生	日期	2023.05.19
4	Center Pin Terminal 1	Brass t=0.4	1	Tin plating	5~10	±0.30	SHEET	1:1	UNIT	mm
3	Center Pin 1	Brass	1	Ni plating	ANGLE	±3°	THESE DRAWINGS AND SPECIFICATIONS ARE THE PROPERTY OF ACCURATE INNOTECH INC. AND SHALL NOT BE REPRODUCED OR USED IN ANY MANNER WITHOUT THE PRIOR WRITTEN CONSENT OF ACCURATE INNOTECH INC.			
2	Cover	PBT	1	Black						
1	Housing	PBT	1	表面处理/颜色						
项目	名称	材质	数量	表面处理/颜色						

东莞市铨高电子制品有限公司