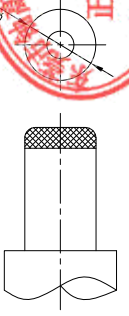


PCB. 焊接图

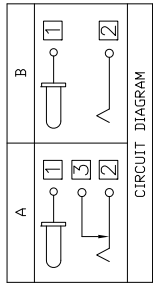
PCB WELDING DRAWING

主要技术参数、性能

额定电流、电压	1.5A DC48V
接触电阻	≤ 30mΩ
绝缘电阻	≥ 100MΩ
耐电压	500VAC
插拔力	3-30N
寿命	5000次
温度范围	-20℃~70℃
湿度范围	-40℃~85℃



DC MATE PLUG



Model No.	G	H	I	J
CENTER PIN	φ1.65	φ2.0	φ2.35	φ2.5



7					一般公差		绘图	杨瑛平	产品名称	DC JACK
6	Shunt Terminal 3	Brass t=0.5	1	Ti plating	0.5~2	±0.10	审核	郑金钰	产品型号	YG-DCB0-005EA
5	Tip Spring 2	Phorshor Bronze t=0.3	1	Ti plating	2~5	±0.25	批准	林进生	日期	2023.05.19
4	Center Pin Terminal 1	Brass t=0.5	1	Ti plating	5~10	±0.30				
3	Center Pin 1	Brass	1	Sn plating	ANGLE	±3°			1:1 UNIT	mm
2	Cover	PBT UL 94V-0	1	Black	THESE DRAWINGS AND SPECIFICATIONS ARE THE PROPERTY OF ACCURATE INNOTECH INC. AND SHALL NOT BE REPRODUCED OR USED IN ANY MANNER WITHOUT THE PRIOR WRITTEN CONSENT OF ACCURATE INNOTECH INC.					
1	Housing	PBT UL 94V-0	1	Black						
项目	名称	材质	数量	表面处理/颜色						

东莞市铀高电子制品有限公司

RoHS Compliant
2002/95/EC

