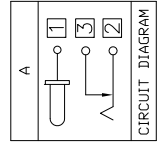
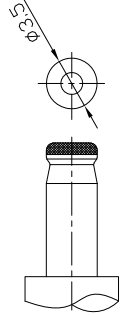


### PCB. 焊接图

PCB WELDING DRAWING



Model No.	C	E
CENTER PIN	φ1.0	φ1.3



### 主要技术参数、性能

额定电流、电压	2A DC20V
接触电阻	≤ 30 mΩ
绝缘电阻	≥ 100MΩ
耐电压	500VAC
插拔力	3-30N
寿命	5000次
温度范围	-20°C~70°C
湿度范围	-40°C~85°C

6	Shunt terminal 3	Brass t=0.3	1	Silver Plating	0.5~2	±0.10	杨瑛平	产品名称	DC JACK	
5	Tip spring 2	Stainless Steel t=0.2	1	Silver Plating	2~5	±0.25	郑金钰	产品型号	YG-DCB0-003BA	
4	Center pin 1	Brass t=0.3	1	Silver Plating	5~10	±0.30	林进生	日期	2023.05.19	
3	Cover	PA66/PBT	1		ANGLE	±3°	1:1	UNIT	mm	
2	Housing	PA66/PBT	1		THESE DRAWINGS AND SPECIFICATIONS ARE THE PROPERTY OF ACCURATE INNOTECH INC. AND SHALL NOT BE REPRODUCED OR USED IN ANY MANNER WITHOUT THE PRIOR WRITTEN CONSENT OF ACCURATE INNOTECH INC.					
1	项目	名称	数量	表面处理/颜色						

东莞市铷高电子有限公司